

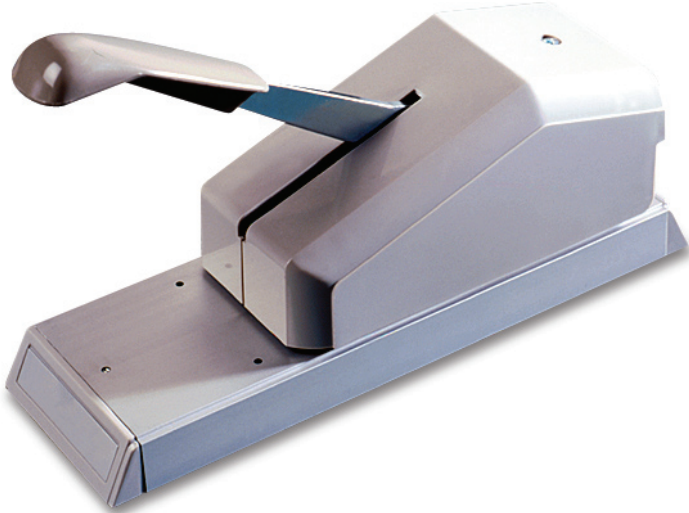


**ADDRESSOGRAPH
BARTIZAN**

The Addressograph Bartizan 871 is a compact, versatile pump handle imprinter capable of producing high quality impressions for a variety of data capture applications. With the 871 imprinter, crisp, readable impressions can be created time after time.

▼
871

Pump Handle Imprinter



You'll never know until the **day** you need one!



Model 871

▶ The Addressograph Bartizan 871 provides superior legibility and effortless action you can depend on to precisely reproduce the information you need - in seconds. Just insert the card, position the form and press the handle. It's that simple. We know how important it is to your retail credit card business to make fast, accurate impressions. That is why the Addressograph Bartizan 871 imprinter provides crisp impressions on any size or type form - from bound forms to individual form sets.

Chargebacks

▶ Chargebacks occur when a customer or bank disputes a manually entered credit card transaction. Using an Addressograph Bartizan imprinter provides you with a copy of the transaction needed to prevent chargebacks.

Backup

▶ Addressograph Bartizan imprinters are the ideal solution to today's electronic problems. When electronic terminals fail, communication is lost or authorization is held-up, your business won't suffer if you have an Addressograph Bartizan imprinter.

Customization

▶ One of Addressograph Bartizan's unique capabilities is in the area of customization. Most imprinters can be customized with any color or logo. Logos can be applied to the imprinters in four different ways - hot stamping, silk screening, hot stamp transfers, or labels. Customization contributes to your corporate identity and image at a very reasonable cost. Contact us to learn more about customized imprinters.

Specifications

- ▶ • **Dimensions** - H 4.5" x W 3 ½" x L 11.19" or 11.43 cm x 8.89 cm x 28.41 cm
- ▶ • **Weight** - 3.8 lbs (1.72 kg)
- ▶ • **Material** - Durable plastic and aluminum
- ▶ • **Color** - Gray
- ▶ • **Card Mounting** - Accepts CR50 and CR80 size credit cards
- ▶ • **Sales Slip** - Individual and multi-form sets that can be imprinted along either edge of the form
- ▶ • **Merchant Plates** - Our standard imprinters are set-up for use with a 3 line embossed plate of .014 - .016 over material height.
- ▶ • **Options** - Dry print roller, six-digit dater, 80 column forms tray, and adjustable forms tray. Packaging options include individual box and master pack, bulk pack or other custom requirements.

